

BIOLOGIC

SITE MODULE



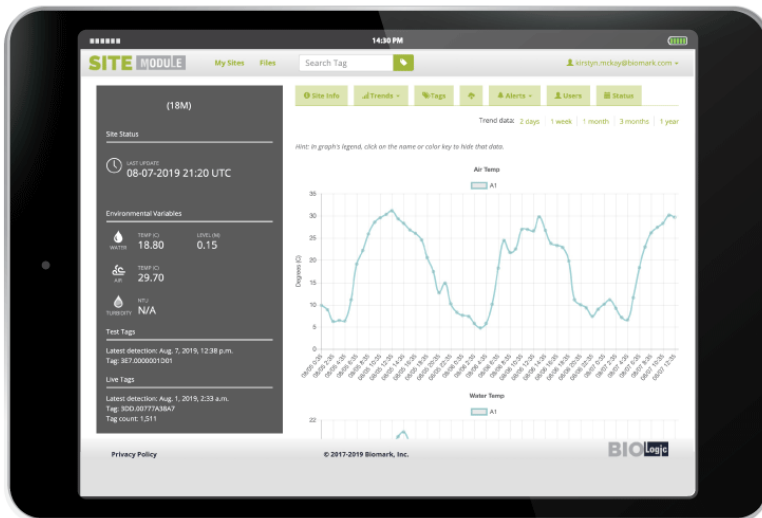
Biomark



Biomark's **BioLogic Site Module** provides near real-time access to view status of remote PIT-tag detection sites. Data is retrieved every 4-hrs and displayed in the web portal. BioLogic Site Module is an effective tool for managing O&M labor and minimizing downtime; resulting in a robust dataset.

KEY METRICS DISPLAYED INCLUDE:

- Last tag detected
- Last connection
- Input voltage
- Antenna noise
- Antenna current and capacitance
- Other metrics such as water flow levels, air and water temperatures (requires additional equipment)



FEATURES

- Automatic email notifications if a site variable deviates from a specified range.
- Diagnostic and tag detection data can be viewed and exported directly to CSV files.
- Detection sites can be grouped to allow related users the ability to see where their tags are detected across a geographic region.

BIO Logic

Subscription Plans

Price

Standard Subscription Plan

\$120/month

Subscription with Cell Plan

\$136/month

Subscription with Satellite Plan

\$255/month